

## Other Courses at the GAA

Diploma in Gemmology\*

Diploma in Diamond Technology\*

Practical Diamond Grading

Advanced Diamond Grading

Retail Diamond Consultant

Retail Opal & Pearl Consultant\*\*

Retail Coloured Gemstone Consultant\*\*

Retail Training by Correspondence

Synthetic and Gemmology Update

Introduction to Gems and Gemmology

Introduction to Antique Jewellery\*\*

Jewellery Product Knowledge\*\*

Jewellery Sketching

Jewellery Design

Pearl Threading

Advanced Pearls

Advanced Opals

Advanced Jade\*\*

Administration, Management  
and Human Resources

\*Also available in Correspondence/Flexible Mode

\*\*Not available in all States

### New South Wales Division

24 Wentworth Ave, Darlinghurst NSW 2010

Tel: (02) 9264 5078 Fax: (02) 9283 5629

email: nsw@gem.org.au

### Queensland Division

PO Box 144, Grange QLD 4051

Tel: (07) 3357 1088 Fax: (07) 3861 0499

email: qld@gem.org.au

### South Australian Division

GPO Box 191, Adelaide SA 5001

Tel: (08) 8227 1377 Fax: (08) 8227 1377

email: sa@gem.org.au

### Tasmanian Division

PO Box 2138, Howrah TAS 7108

Tel: (03) 6261 4233

email: tas@gem.org.au

### Victorian Division

38-382 Spencer St, West Melbourne VIC 3003

Tel: (03) 9326 6160 Fax: (03) 9326 6150

email: vic@gem.org.au

### Western Australian Division

PO Box 431, Claremont WA 6910

Tel: (08) 9385 5489 Fax: (08) 9286 4986

email: wa@gem.org.au

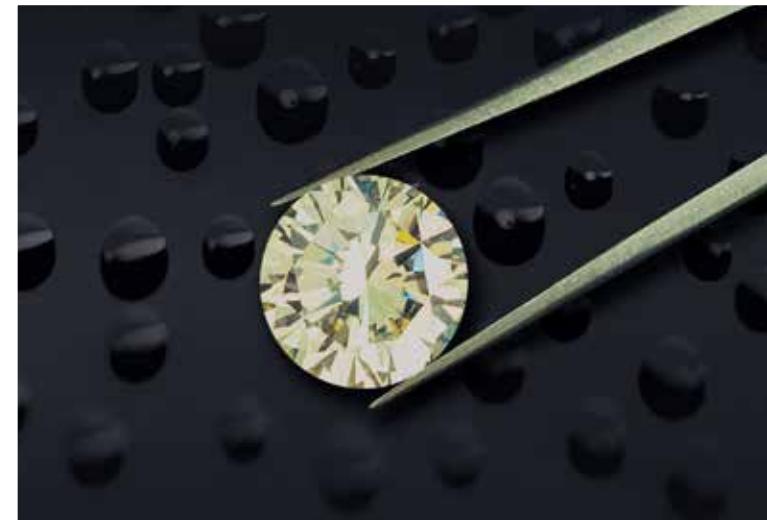
Please phone for more details  
or visit **[www.gem.org.au](http://www.gem.org.au)**



# GAA

Gemmological Association of Australia

# Advanced Practical Diamond Grading



*Passionately educating the industry  
and consumers about gemstones*



# GAA

Gemmological Association of Australia

## Boost your diamond grading skills

This course is designed to take your Practical Diamond Grading qualifications to the next level. Become a diamond specialist with the advanced technical knowledge this course provides.

Learn how to grade fancy and old diamond cuts, set diamonds, recuts, and coloured diamonds. Much of this course is spent on practical work so you qualify with the skills to be well prepared for the next stage of your career working with diamonds.



## Course details

Discover the factors that affect the make of a diamond; understand the effect of varying crown and pavilion angles and the relationship between pavilion angle and depth.

Practical experience in visually estimating crown angle, pavilion depth and table percentage; evaluating brilliance, dispersion and scintillation.

Learn the theory behind recutting old cut and damaged diamonds and how to calculate new weight and factor for grade changes.

Learn the factors that affect make in fancy cut diamonds.

Practical experience in colour grading set diamonds; learn the precautions to be made when colour grading set stones.

Name old cut diamonds and learn the features of each and how to estimate their weight.

Perform colour grading of coloured diamonds.

Parcel grading of melee.

## Qualification

Advanced Diamond Grading Certificate issued by the GAA.

## Pre-requisites

Practical Diamond Grading.

## Duration

16 hours over 2 days.

## Assessment

Practical assessment.

## Equipment

Bring diamond tweezers, a gemstone cleaning cloth, hand lens (10x loupe), calculator and a Leveridge gauge (if available).

Course Code: **GAAAPDG**

